

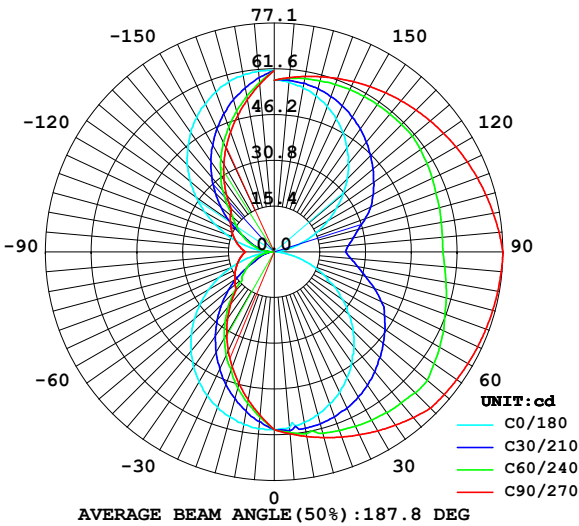
LUMINAIRE PHOTOMETRIC TEST REPORT

Report number:

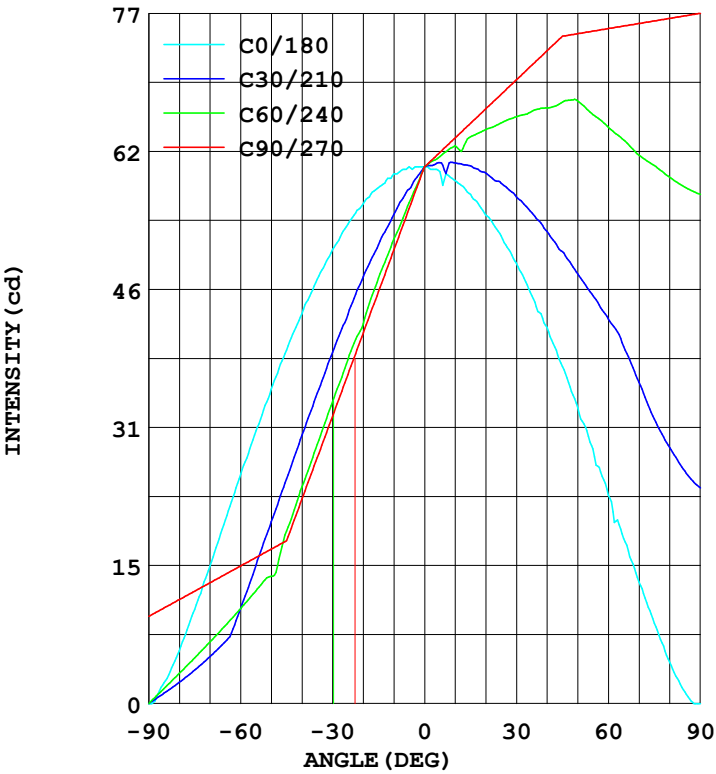
MANUFACTURER:	Address:	
NAME: 553105	TYPE:BLK	WEIGHT:
SPECIFICATION:	DIMENSION:	SERIAL No.:

DATA OF LAMP		Imax(cd)	77.05	S/MH(C0/180)	1.26
MODEL		EFFICIENCY(%)	100.0	S/MH(C90/270)	0.85
NOMINAL POWER(W)	14	TOTAL FLUX(lm)	438.11	Voltage(V)	222.8
RATED VOLTAGE(V)	222	EFFICIENCY(lm/W)	30.2	Current(A)	0.124
NOMINAL FLUX(lm)	438.1	$\eta$ up(%)	49.5	Power(W)	14.50
LAMPS QUANTITY	1	$\eta$ down(%)	50.5	Power Factor(PF)	0.525
TEST VOLTAGE(V)	222.8	Effictive Flux(lm)	430.9	EEI	0.368

LUMINOUS INTENSITY DISTRIBUTION



LUMINOUS INTENSITY DISTRIBUTION



Test System:HOPOO HPG1900  
Temperature:25.3DEG  
Operators:  
Test Date:2024年09月15日

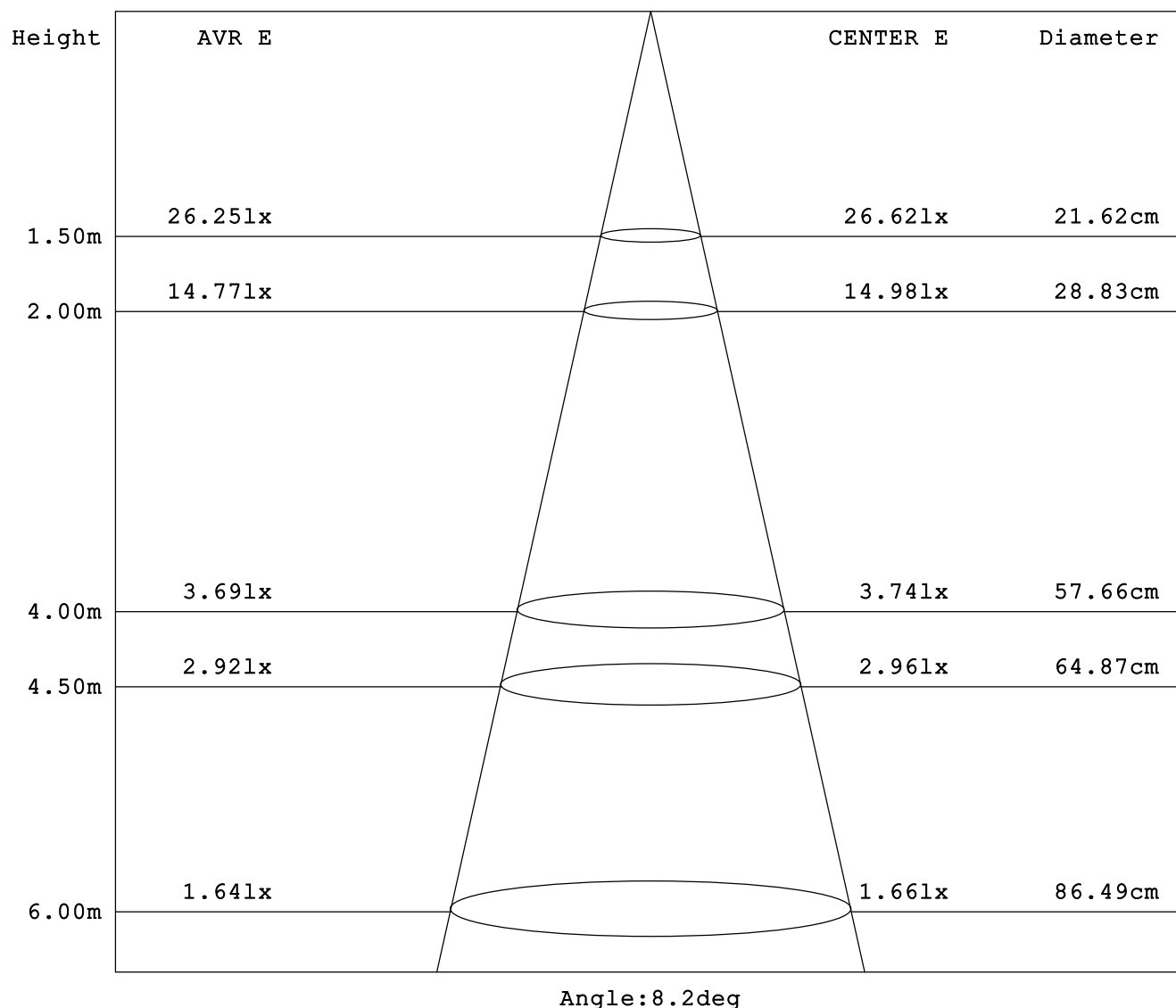
Test Set: 5.0deg/s B-Beta (TYPE B)  
Humidity:65.0%  
Test Distance:16.000 m  
Remarks:

# HONGPU GONIOPHOTOMETERS SYSTEM TEST REPORT

## AVERAGE AND CENTER E Figure

Report number:

MANUFACTURER:	Address:	
NAME: 553105	TYPE:BLK	WEIGHT:
SPECIFICATION:	DIMENSION:	SERIAL No.:



Test System:HOPOO HPG1900  
Temperature:25.3DEG  
Operators:  
Test Date:2024年09月15日

Test Set: 5.0deg/s B-Beta (TYPE B)  
Humidity:65.0%  
Test Distance:16.000 m  
Remarks:

HONGPU GONIOPHOTOMETERS SYSTEM TEST REPORT

ZONAL FLUX DIAGRAM

Report number:

MANUFACTURER:	Address:	
NAME: 553105	TYPE:BLK	WEIGHT:
SPECIFICATION:	DIMENSION:	SERIAL No.:

γ	C0	C45	C90	C135	C180	C225	C270	C315	γ	Φ zone	Φ total
5.0	59.90	56.51	55.26	56.38	59.39	60.79	61.52	60.91	0- 5	1.414	1.414
10.0	59.13	53.08	50.63	52.61	58.36	61.42	63.14	61.89	5- 10	4.145	5.560
15.0	57.59	48.84	45.99	48.46	56.83	61.67	64.76	62.24	10- 15	6.698	12.25
20.0	55.80	44.80	41.35	44.11	54.52	61.77	66.38	62.37	15- 20	9.009	21.26
25.0	53.50	40.42	36.72	39.64	52.22	61.67	68.01	62.49	20- 25	11.03	32.30
30.0	50.68	35.79	32.08	35.01	49.15	61.29	69.63	62.14	25- 30	12.74	45.04
35.0	47.36	30.96	27.44	29.58	45.56	60.72	71.25	61.70	30- 35	14.09	59.14
40.0	43.52	26.10	22.81	25.62	41.98	60.16	72.87	61.00	35- 40	15.08	74.22
45.0	39.42	21.19	18.17	20.86	37.63	59.18	74.49	60.31	40- 45	15.70	89.93
50.0	35.07	16.29	17.23	16.12	33.02	58.26	74.78	59.34	45- 50	16.01	105.9
55.0	30.46	11.60	16.29	11.60	28.41	57.27	75.06	58.48	50- 55	16.06	122.0
60.0	25.60	9.650	15.36	9.820	23.29	54.70	75.34	56.57	55- 60	15.86	137.8
65.0	20.48	7.818	14.42	7.818	18.43	52.14	75.63	54.69	60- 65	15.45	153.3
70.0	15.36	6.199	13.48	6.253	13.56	49.69	75.91	53.14	65- 70	14.90	168.2
75.0	10.49	4.604	12.54	4.595	8.960	47.63	76.20	51.83	70- 75	14.22	182.4
80.0	5.888	2.936	11.60	3.016	4.608	45.93	76.48	51.19	75- 80	13.51	195.9
85.0	2.304	1.453	10.66	1.493	1.280	44.64	76.77	50.84	80- 85	12.84	208.8
90.0	0	0	9.728	0	0	43.77	77.05	50.94	85- 90	12.29	221.1
95.0	3.584	2.055	10.92	1.774	0.256	43.83	76.00	50.24	90- 95	12.27	233.3
100.0	7.680	4.131	12.11	3.573	3.072	44.34	74.95	49.99	95-100	12.77	246.1
105.0	12.28	6.375	13.31	5.421	6.912	45.27	73.89	49.95	100-105	13.37	259.5
110.0	17.15	8.523	14.50	7.337	11.26	46.54	72.84	50.66	105-110	14.01	273.5
115.0	22.01	10.66	15.70	9.338	15.87	48.12	71.79	51.46	110-115	14.60	288.1
120.0	27.13	12.99	16.89	11.65	20.73	49.79	70.74	52.50	115-120	15.09	303.2
125.0	32.25	15.57	18.09	13.89	25.60	51.57	69.68	53.59	120-125	15.44	318.6
130.0	36.86	19.91	19.28	18.23	30.20	52.66	68.63	54.74	125-130	15.60	334.3
135.0	41.47	24.53	20.48	22.83	34.81	53.75	67.58	55.99	130-135	15.55	349.8
140.0	45.31	29.29	25.00	27.51	38.91	54.81	66.50	57.18	135-140	15.28	365.1
145.0	49.15	33.71	29.52	32.10	43.00	55.90	65.42	57.94	140-145	14.73	379.8
150.0	52.22	38.30	34.04	36.71	46.33	56.66	64.34	58.77	145-150	13.80	393.6
155.0	55.04	42.68	38.57	41.18	49.40	57.41	63.26	59.30	150-155	12.51	406.1
160.0	57.34	46.92	43.09	45.55	52.22	57.98	62.17	59.70	155-160	10.86	417.0
165.0	59.39	50.72	47.61	49.95	54.52	58.30	61.09	59.65	160-165	8.895	425.9
170.0	60.41	54.52	52.13	54.01	56.06	58.39	60.01	59.34	165-170	6.629	432.5
175.0	61.18	57.98	56.66	57.72	57.34	58.37	58.93	58.86	170-175	4.114	436.7
180.0	61.18	61.18	61.18	61.18	57.85	57.85	57.85	57.85	175-180	1.405	438.1
DEG	LUMINOUS INTENSITY:cd								UNIT:lm		

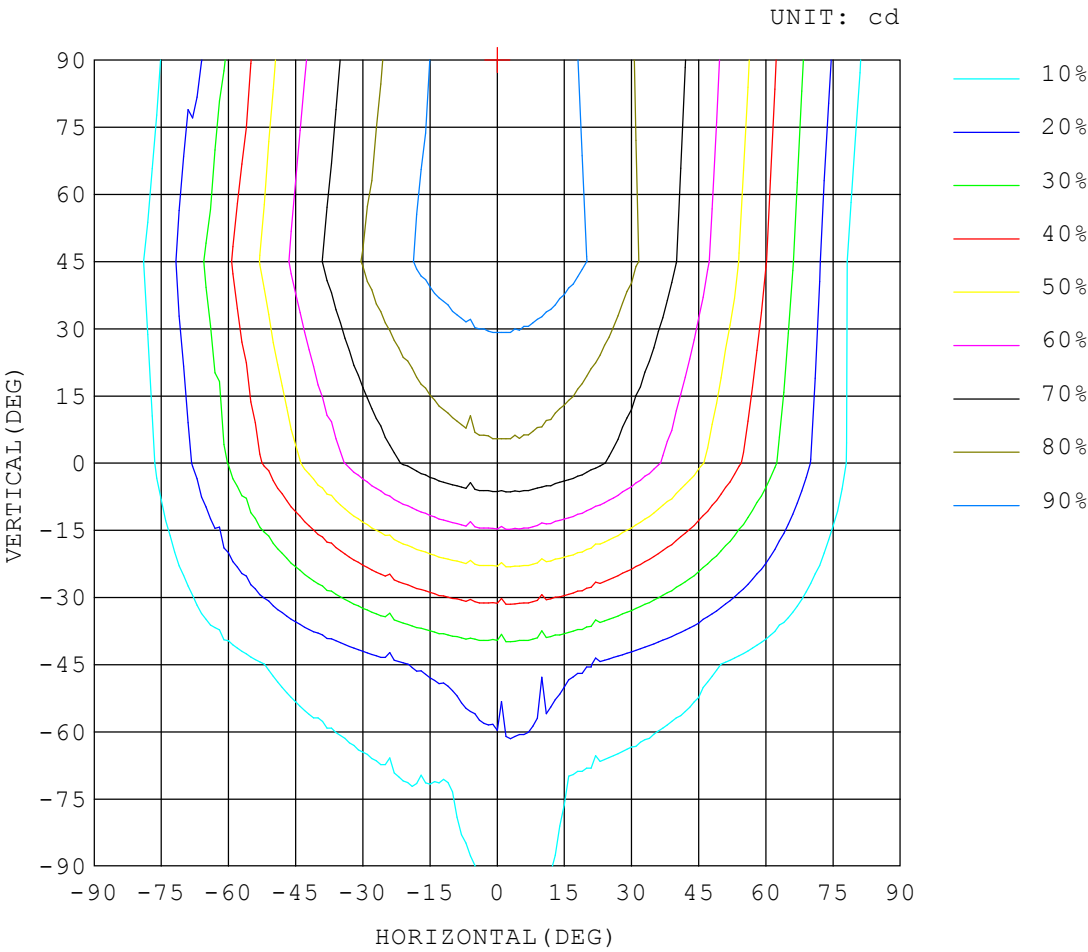
Test System:HOPOO HPG1900  
Temperature:25.3DEG  
Operators:  
Test Date:2024年09月15日

Test Set: 5.0deg/s B-Beta (TYPE B)  
Humidity:65.0%  
Test Distance:16.000 m  
Remarks:

ISOCANDELA DIAGRAM

Report number:

MANUFACTURER:	Address:	
NAME: 553105	TYPE:BLK	WEIGHT:
SPECIFICATION:	DIMENSION:	SERIAL No.:



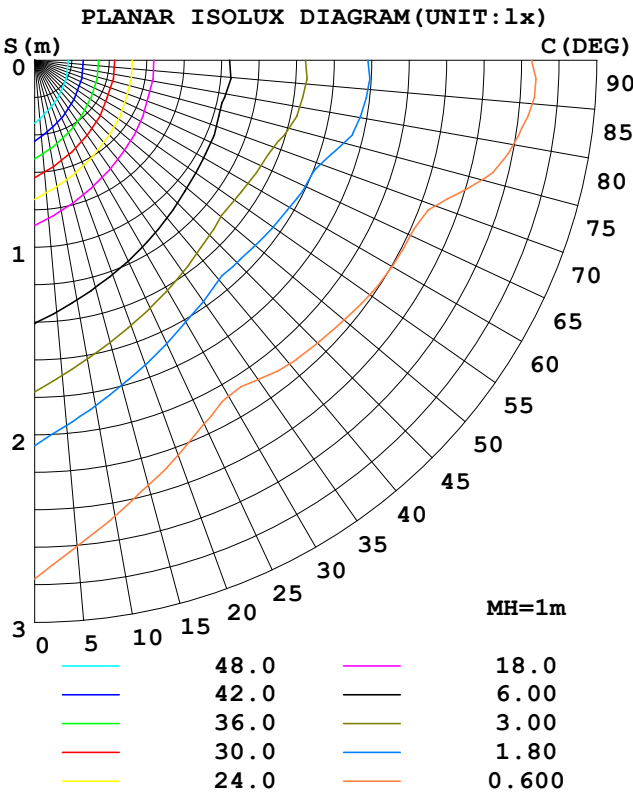
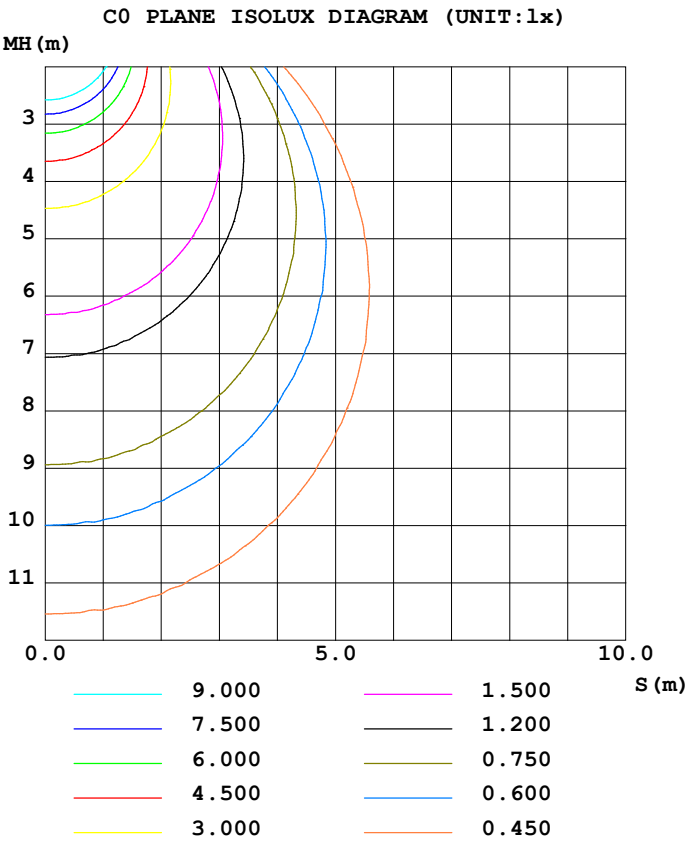
Test System:HOPOO HPG1900  
Temperature:25.3DEG  
Operators:  
Test Date:2024年09月15日

Test Set: 5.0deg/s B-Beta (TYPE B)  
Humidity:65.0%  
Test Distance:16.000 m  
Remarks:

ISOLUX DIAGRAM

Report number:

MANUFACTURER:	Address:	
NAME: 553105	TYPE:BLK	WEIGHT:
SPECIFICATION:	DIMENSION:	SERIAL No.:



Test System:HOPOO HPG1900  
Temperature:25.3DEG  
Operators:  
Test Date:2024年09月15日

Test Set: 5.0deg/s B-Beta (TYPE B)  
Humidity:65.0%  
Test Distance:16.000 m  
Remarks:

HONGPU GONIOPHOTOMETERS SYSTEM TEST REPORT

LUMINOUS DISTRIBUTION INTENSITY DATA

Report number:

MANUFACTURER:	Address:	
NAME: 553105	TYPE:BLK	WEIGHT:
SPECIFICATION:	DIMENSION:	SERIAL No.:

UNIT: cd

C (DEG) γ (DEG)	0	5	10	15	20	25	30	35	40	45	50	55	60	65	70
0.0	59.9	59.9	59.9	59.9	59.9	59.9	59.9	59.9	59.9	59.9	59.9	59.9	59.9	59.9	59.9
5.0	59.9	59.4	59.0	58.6	58.2	57.8	57.4	57.0	56.7	56.5	56.3	56.1	55.9	55.7	55.5
10.0	59.1	58.2	57.4	56.6	55.9	55.1	54.5	54.0	53.5	53.0	52.5	52.1	51.8	51.3	51.1
15.0	57.5	56.4	55.2	54.1	53.1	52.1	51.1	50.5	49.7	48.8	48.1	47.8	47.4	47.0	46.7
20.0	55.8	54.2	52.7	51.3	50.0	48.7	47.6	46.6	45.6	44.8	44.0	43.4	42.4	42.4	42.2
25.0	53.5	51.5	49.6	47.9	46.3	44.7	43.4	42.3	41.4	40.4	39.6	38.9	38.4	37.3	37.5
30.0	50.6	48.3	46.1	44.1	42.2	40.7	39.2	37.8	36.5	35.7	35.0	34.2	33.7	33.2	31.9
35.0	47.3	44.7	42.2	40.0	37.9	36.1	34.6	33.1	32.0	30.9	29.7	29.5	28.9	28.5	28.2
40.0	43.5	40.6	38.0	35.6	33.4	31.5	29.9	28.4	27.1	26.1	25.2	24.0	24.1	23.7	23.3
45.0	39.4	36.2	33.5	31.0	28.7	26.7	25.0	23.5	22.2	21.1	20.2	19.5	19.2	18.8	18.7
50.0	35.0	31.7	28.7	26.1	23.8	22.0	20.2	18.7	17.4	16.2	15.3	14.6	14.1	15.3	15.8
55.0	30.4	26.8	23.8	21.3	19.0	17.0	15.4	13.9	12.6	11.6	11.8	12.2	12.5	13.1	13.6
60.0	25.6	22.0	18.9	16.4	14.3	12.3	10.6	9.24	9.42	9.65	9.96	10.2	10.6	10.7	11.5
65.0	20.4	16.9	14.0	11.8	9.71	7.83	6.92	7.13	7.57	7.81	8.08	8.43	8.70	8.76	9.56
70.0	15.3	11.9	9.44	7.30	5.35	5.00	5.23	5.46	5.70	6.19	6.33	6.59	6.87	7.16	7.72
75.0	10.4	7.39	5.12	3.14	3.20	3.48	3.72	3.94	4.15	4.60	4.67	4.97	5.09	5.33	5.81
80.0	5.88	3.40	1.39	1.55	1.90	2.06	2.37	2.54	2.70	2.93	3.07	3.33	3.37	3.53	3.92
85.0	2.30	0.01	0.48	0.64	0.86	1.02	1.15	1.24	1.33	1.45	1.52	1.63	1.67	1.75	2.07
90.0	0.00	0.00	0.00	0.00	0.00	0.00	0.00	0.00	0.00	0.00	0.00	0.00	0.00	0.00	0.26
95.0	3.58	1.54	1.52	1.46	1.64	1.79	1.88	1.93	1.99	2.05	2.08	2.18	2.17	2.22	2.46
100.0	7.68	5.06	3.17	3.30	3.49	3.71	3.86	3.91	4.01	4.13	4.18	4.39	4.35	4.44	4.68
105.0	12.2	9.26	7.21	5.67	5.59	5.87	5.96	5.93	6.08	6.37	6.31	6.52	6.56	6.65	6.92
110.0	17.1	13.8	11.5	9.84	8.60	8.16	8.10	8.23	8.22	8.52	8.50	8.63	8.81	8.98	9.19
115.0	22.0	18.8	16.3	14.5	12.8	11.3	10.4	10.4	10.6	10.6	10.8	10.9	11.1	11.3	11.5
120.0	27.1	23.9	21.3	19.1	17.3	15.6	14.2	13.0	13.0	12.9	13.1	13.2	13.3	13.6	13.7
125.0	32.2	28.9	26.1	23.8	22.0	20.2	18.9	17.5	16.3	15.5	15.5	15.6	15.7	15.9	15.9
130.0	36.8	33.7	31.1	28.7	26.6	25.0	23.4	22.0	20.9	19.9	19.0	18.2	18.3	18.2	18.4
135.0	41.4	38.4	35.8	33.4	31.4	29.6	28.0	26.8	25.5	24.5	23.7	22.9	22.4	21.8	21.5
140.0	45.3	42.5	40.0	37.8	35.9	34.2	32.7	31.3	30.1	29.2	28.3	27.6	27.0	26.3	26.0
145.0	49.1	46.6	44.4	42.3	40.4	38.7	37.1	35.9	34.6	33.7	32.9	32.1	31.4	31.0	30.5
150.0	52.2	50.0	48.0	46.2	44.5	43.1	41.5	40.2	39.2	38.3	37.4	36.6	36.1	35.5	34.9
155.0	55.0	53.1	51.4	49.7	48.3	46.9	45.7	44.5	43.5	42.6	41.7	41.2	40.5	39.9	39.4
160.0	57.3	55.8	54.4	53.0	51.8	50.7	49.6	48.4	47.6	46.9	46.1	45.4	44.8	44.3	43.9
165.0	59.3	58.2	57.1	56.0	55.0	54.0	53.1	52.3	51.4	50.7	50.1	49.5	49.1	48.6	48.3
170.0	60.4	59.6	58.8	58.1	57.4	56.8	56.1	55.5	54.9	54.5	54.0	53.5	53.3	52.9	52.6
175.0	61.1	60.7	60.3	60.0	59.6	59.2	58.9	58.5	58.2	57.9	57.7	57.4	57.2	57.0	56.9
180.0	61.1	61.1	61.1	61.1	61.1	61.1	61.1	61.1	61.1	61.1	61.1	61.1	61.1	61.1	61.1

Test System:HOPOO HPG1900  
Temperature:25.3DEG  
Operators:  
Test Date:2024年09月15日

Test Set: 5.0deg/s B-Beta (TYPE B)  
Humidity:65.0%  
Test Distance:16.000 m  
Remarks:

HONGPU GONIOPHOTOMETERS SYSTEM TEST REPORT

LUMINOUS DISTRIBUTION INTENSITY DATA

Report number:

MANUFACTURER:	Address:	
NAME: 553105	TYPE:BLK	WEIGHT:
SPECIFICATION:	DIMENSION:	SERIAL No.:

UNIT: cd

C (DEG) γ (DEG)	75	80	85	90	95	100	105	110	115	120	125	130	135	140	145
0.0	59.9	59.9	59.9	59.9	59.9	59.9	59.9	59.9	59.9	59.9	59.9	59.9	59.9	59.9	59.9
5.0	55.3	55.1	55.2	55.2	55.2	55.3	55.3	55.3	55.4	55.6	55.8	56.1	56.3	56.6	56.9
10.0	50.9	50.7	50.3	50.6	50.6	50.6	50.7	50.9	51.2	51.3	50.9	51.4	52.6	53.0	53.5
15.0	46.3	46.2	45.7	45.9	45.9	46.0	46.2	46.2	45.9	47.0	47.4	47.8	48.4	49.1	49.8
20.0	41.9	41.6	41.3	41.3	41.2	41.4	41.4	41.6	42.0	42.4	42.9	43.5	44.1	44.9	45.7
25.0	37.3	37.0	36.9	36.7	36.6	36.8	36.5	37.1	37.4	37.8	38.2	38.8	39.6	40.4	41.4
30.0	32.6	32.4	32.3	32.0	32.0	32.0	32.3	32.4	32.6	33.0	33.5	34.2	35.0	35.9	36.5
35.0	27.8	27.7	27.7	27.4	27.4	27.2	27.5	27.6	27.9	28.2	28.8	29.4	29.5	31.3	32.4
40.0	22.2	23.1	23.1	22.8	22.8	22.8	22.8	23.0	23.1	23.5	24.0	24.1	25.6	26.5	27.7
45.0	17.7	18.5	18.5	18.1	18.2	18.3	18.1	18.2	18.3	18.7	18.1	20.0	20.8	21.8	22.9
50.0	16.7	17.1	17.5	17.2	17.1	16.5	15.6	15.2	15.0	14.4	14.6	15.2	16.1	17.1	18.3
55.0	15.4	16.1	16.5	16.2	15.9	15.0	13.6	13.3	13.1	11.6	12.3	11.9	11.6	12.5	13.9
60.0	14.0	15.0	15.6	15.3	14.7	13.4	11.9	11.5	11.4	10.8	10.4	9.98	9.82	9.64	9.54
65.0	12.4	13.9	14.6	14.4	13.5	11.7	10.1	10.1	9.65	9.08	8.61	8.16	7.81	7.77	7.57
70.0	10.7	12.5	13.7	13.4	12.3	9.82	8.33	8.66	7.66	7.37	6.83	6.36	6.25	6.03	5.83
75.0	8.87	11.4	12.8	12.5	11.1	7.82	6.69	7.10	5.77	5.59	5.08	4.74	4.59	4.41	4.23
80.0	7.05	10.4	11.9	11.6	9.99	5.81	5.06	5.46	4.38	3.94	3.40	3.07	3.01	2.88	2.74
85.0	5.31	9.53	11.1	10.6	8.83	3.86	3.44	3.86	2.85	2.34	1.82	1.52	1.49	1.42	1.34
90.0	3.71	8.70	10.2	9.72	7.68	2.04	1.79	2.30	1.28	0.77	0.26	0.00	0.00	0.00	0.00
95.0	5.63	10.0	11.3	10.9	9.08	4.10	3.71	4.13	3.18	2.64	2.13	1.82	1.77	1.68	1.59
100.0	7.70	11.3	12.5	12.1	10.5	6.28	5.59	6.01	5.14	4.53	4.02	3.66	3.57	3.40	3.25
105.0	9.84	12.7	13.6	13.3	11.9	8.54	7.48	7.91	7.13	6.47	6.01	5.61	5.42	5.18	5.08
110.0	11.9	14.0	14.7	14.5	13.3	10.8	9.39	9.74	9.15	8.53	8.06	7.63	7.33	7.20	6.94
115.0	14.0	15.4	15.8	15.7	14.7	13.0	11.3	11.5	11.1	10.5	10.1	9.76	9.33	9.21	8.91
120.0	15.9	16.7	17.0	16.8	16.1	14.9	13.3	13.1	13.0	12.6	12.2	11.8	11.6	11.3	11.3
125.0	17.6	18.1	18.1	18.0	17.5	16.7	15.4	15.2	15.1	14.7	14.3	14.0	13.8	14.5	15.5
130.0	19.1	19.3	19.3	19.2	18.9	18.4	17.6	17.4	17.1	16.8	16.9	17.4	18.2	19.1	20.0
135.0	21.1	20.8	20.5	20.4	20.3	20.3	20.3	20.4	20.5	20.9	21.5	22.1	22.8	23.6	24.7
140.0	25.5	25.3	25.0	25.0	24.8	24.8	24.9	24.9	25.2	25.6	26.0	26.7	27.5	28.3	29.3
145.0	30.1	29.8	29.6	29.5	29.3	29.3	29.5	29.6	29.9	30.1	30.7	31.3	32.1	33.0	34.0
150.0	34.6	34.3	34.1	34.0	33.9	34.0	34.1	34.2	34.4	34.8	35.2	36.0	36.7	37.6	38.5
155.0	39.1	38.8	38.6	38.5	38.5	38.5	38.6	38.8	39.1	39.4	39.9	40.4	41.1	42.1	43.0
160.0	43.6	43.3	43.1	43.0	43.0	43.0	43.2	43.4	43.7	44.0	44.5	44.9	45.5	46.3	47.0
165.0	48.0	47.8	47.6	47.6	47.6	47.5	47.8	47.9	48.1	48.5	48.9	49.3	49.9	50.5	51.1
170.0	52.4	52.2	52.1	52.1	52.1	52.1	52.2	52.4	52.6	52.8	53.1	53.5	54.0	54.4	54.9
175.0	56.8	56.7	56.6	56.6	56.6	56.7	56.7	56.7	56.8	57.0	57.2	57.4	57.7	58.0	58.3
180.0	61.1	61.1	61.1	61.1	61.1	61.1	61.1	61.1	61.1	61.1	61.1	61.1	61.1	61.1	61.1

Test System:HOPOO HPG1900  
Temperature:25.3DEG  
Operators:  
Test Date:2024年09月15日

Test Set: 5.0deg/s B-Beta (TYPE B)  
Humidity:65.0%  
Test Distance:16.000 m  
Remarks:

HONGPU GONIOPHOTOMETERS SYSTEM TEST REPORT

LUMINOUS DISTRIBUTION INTENSITY DATA

Report number:

MANUFACTURER:	Address:		
NAME: 553105	TYPE:BLK	WEIGHT:	
SPECIFICATION:	DIMENSION:	SERIAL No.:	

UNIT: cd

C (DEG) γ (DEG)	150	155	160	165	170	175	180	185	190	195	200	205	210	215	220
0.0	59.9	59.9	59.9	59.9	59.9	59.9	59.9	59.9	59.9	59.9	59.9	59.9	59.9	59.9	59.9
5.0	57.2	57.5	57.8	58.2	58.6	58.9	59.3	59.5	59.6	59.8	60.0	60.2	60.3	60.5	60.6
10.0	54.0	54.7	55.3	56.0	56.8	57.5	58.3	58.6	58.9	59.3	59.6	59.9	60.3	60.7	61.0
15.0	50.7	51.4	52.3	53.3	54.4	55.6	56.8	57.2	57.7	58.2	58.7	59.3	60.0	60.5	61.1
20.0	46.7	47.8	48.9	50.1	51.5	52.9	54.5	55.1	55.8	56.5	57.3	58.3	59.2	60.0	60.9
25.0	42.6	43.8	45.1	46.6	48.4	50.2	52.2	52.9	53.8	54.7	55.8	56.9	58.1	59.1	60.3
30.0	38.2	39.6	41.2	42.8	44.8	46.9	49.1	50.0	51.0	52.2	53.6	55.1	56.5	58.1	59.7
35.0	33.7	35.2	36.9	38.7	40.7	43.0	45.5	46.6	47.9	49.4	51.1	52.8	54.7	56.7	58.7
40.0	29.0	30.5	32.1	34.4	36.5	39.1	41.9	43.1	44.4	46.2	47.9	50.3	52.6	55.1	57.6
45.0	24.5	26.0	27.8	29.8	32.0	34.6	37.6	38.9	40.5	42.7	45.0	47.6	50.4	53.2	56.2
50.0	19.8	21.3	23.2	25.0	27.4	29.9	33.0	34.5	36.4	38.8	41.7	44.6	47.9	51.4	54.8
55.0	15.3	16.7	18.4	20.4	22.5	25.2	28.4	29.9	32.0	34.7	37.9	41.6	45.5	49.4	53.5
60.0	10.9	12.3	13.9	15.7	17.8	20.3	23.2	25.0	27.5	30.5	34.3	38.3	42.9	47.6	51.1
65.0	7.41	8.17	9.73	11.5	13.2	15.5	18.4	20.1	22.9	26.4	30.6	35.5	39.8	44.0	48.1
70.0	5.64	5.47	5.71	7.48	8.96	10.8	13.5	15.3	18.3	22.4	27.0	31.4	35.8	40.6	45.3
75.0	4.04	4.01	3.85	3.60	5.01	6.67	8.96	10.8	14.1	18.7	22.4	27.0	31.7	37.5	42.6
80.0	2.59	2.44	2.25	1.94	1.88	3.07	4.60	6.87	10.6	14.1	17.7	23.0	28.5	34.7	40.5
85.0	1.26	1.22	1.02	0.85	0.79	0.52	1.28	4.14	6.25	10.3	15.3	18.9	25.9	32.3	38.9
90.0	0.00	0.00	0.00	0.00	0.00	0.00	0.00	0.26	2.81	7.93	13.5	16.1	24.0	30.7	37.8
95.0	1.51	1.42	1.27	1.12	0.79	0.52	0.26	2.33	4.75	9.25	14.4	18.1	25.1	31.5	38.1
100.0	3.14	2.93	2.67	2.52	2.13	2.95	3.07	4.74	8.25	12.1	15.9	21.4	27.0	33.1	39.0
105.0	4.84	4.58	4.46	4.34	5.50	6.66	6.91	8.62	11.6	15.9	19.8	24.5	29.3	35.2	40.3
110.0	6.67	6.62	6.73	7.99	9.27	10.9	11.2	12.9	15.7	19.4	23.8	28.2	32.5	37.3	42.1
115.0	8.87	9.39	10.7	12.0	13.6	15.6	15.8	17.5	20.0	23.3	27.2	31.5	35.8	40.0	44.0
120.0	12.3	13.5	14.9	16.5	18.3	20.6	20.7	22.2	24.4	27.3	30.6	34.4	38.4	42.5	46.2
125.0	16.7	18.0	19.2	21.2	23.1	25.5	25.6	26.9	28.7	31.3	34.1	37.5	40.9	44.6	48.0
130.0	21.2	22.6	24.2	25.9	28.0	30.4	30.2	31.4	33.1	35.2	37.9	40.4	43.4	46.4	49.5
135.0	25.9	27.1	28.8	30.6	32.7	35.1	34.8	35.8	37.2	39.1	41.1	43.4	46.0	48.5	51.1
140.0	30.5	31.9	33.4	35.2	37.2	39.6	38.9	39.8	41.0	42.6	44.3	46.2	48.3	50.4	52.6
145.0	35.1	36.4	37.9	39.7	41.7	43.9	43.0	43.7	44.7	45.8	47.3	48.9	50.5	52.2	54.0
150.0	39.7	41.0	42.4	43.9	45.7	47.7	46.3	47.0	47.9	48.9	49.9	51.3	52.5	54.0	55.3
155.0	44.0	45.2	46.5	47.8	49.5	51.3	49.4	49.9	50.7	51.5	52.4	53.3	54.3	55.3	56.3
160.0	48.0	49.0	50.3	51.5	52.8	54.3	52.2	52.6	53.1	53.7	54.3	55.1	55.7	56.4	57.2
165.0	51.9	52.6	53.5	54.5	55.5	56.7	54.5	54.8	55.1	55.5	55.9	56.4	56.9	57.4	57.8
170.0	55.4	56.0	56.7	57.4	58.1	58.8	56.0	56.2	56.5	56.8	57.1	57.4	57.6	57.8	58.1
175.0	58.5	58.8	59.2	59.5	59.9	60.2	57.3	57.4	57.5	57.6	57.7	57.9	58.0	58.1	58.2
180.0	61.1	61.1	61.1	61.1	61.1	61.1	57.8	57.8	57.8	57.8	57.8	57.8	57.8	57.8	57.8

Test System:HOPOO HPG1900  
Temperature:25.3DEG  
Operators:  
Test Date:2024年09月15日

Test Set: 5.0deg/s B-Beta (TYPE B)  
Humidity:65.0%  
Test Distance:16.000 m  
Remarks:



LUMINOUS DISTRIBUTION INTENSITY DATA

Report number:

MANUFACTURER:	Address:		
NAME: 553105	TYPE:BLK	WEIGHT:	
SPECIFICATION:	DIMENSION:	SERIAL No.:	

UNIT: cd

C (DEG) γ (DEG)	225	230	235	240	245	250	255	260	265	270	275	280	285	290	295
0.0	59.9	59.9	59.9	59.9	59.9	59.9	59.9	59.9	59.9	59.9	59.9	59.9	59.9	59.9	59.9
5.0	60.7	60.8	60.9	61.0	61.1	61.2	61.4	61.5	61.5	61.5	61.5	61.5	61.4	61.4	61.3
10.0	61.4	61.0	61.1	62.2	62.5	62.6	62.8	62.9	63.1	63.1	63.1	63.0	63.0	62.8	62.6
15.0	61.6	62.2	62.7	63.2	62.9	63.9	64.3	64.4	64.7	64.7	64.7	64.6	64.3	64.3	63.9
20.0	61.7	62.6	63.3	64.0	64.7	65.0	65.7	66.0	66.2	66.3	66.3	66.1	66.0	65.6	65.1
25.0	61.6	62.7	63.8	64.8	65.6	66.4	66.6	67.6	67.8	68.0	67.9	67.6	67.3	66.8	66.1
30.0	61.2	62.6	64.2	65.5	66.6	67.6	68.4	69.1	69.4	69.6	69.6	69.3	68.8	68.0	67.1
35.0	60.7	62.6	64.2	66.0	67.5	68.6	69.7	70.4	70.9	71.2	71.2	70.7	70.1	69.1	67.9
40.0	60.1	62.3	64.6	66.4	68.3	69.8	71.1	72.0	72.5	72.8	72.7	72.2	71.4	70.3	68.8
45.0	59.1	62.2	64.6	67.1	69.3	71.1	72.3	73.5	74.2	74.4	74.3	73.8	72.7	71.3	69.8
50.0	58.2	61.7	64.7	67.2	69.1	70.9	72.1	73.4	74.4	74.7	74.5	73.9	72.8	71.5	69.8
55.0	57.2	60.2	63.0	65.7	68.1	70.1	71.8	73.2	74.5	75.0	74.7	73.8	72.5	70.9	69.0
60.0	54.7	58.0	61.0	64.3	67.1	69.5	71.3	73.0	74.6	75.3	75.0	73.7	72.2	70.5	68.3
65.0	52.1	55.9	59.1	62.9	66.0	68.8	71.0	72.7	74.6	75.6	75.3	73.5	71.8	69.9	67.5
70.0	49.6	53.9	57.6	61.1	65.0	68.1	70.6	72.4	74.5	75.9	75.5	73.4	71.6	69.4	66.9
75.0	47.6	52.3	56.4	60.0	64.1	67.5	70.2	72.2	74.5	76.2	75.8	73.3	71.3	69.0	66.3
80.0	45.9	50.8	55.4	58.7	63.3	66.9	69.9	72.0	74.5	76.4	76.0	73.2	71.1	68.7	65.8
85.0	44.6	49.8	54.6	57.6	62.7	66.4	69.6	71.8	74.4	76.7	76.2	73.2	71.0	68.5	65.5
90.0	43.7	49.1	54.0	56.8	62.2	66.0	69.3	71.6	74.4	77.0	76.5	73.2	70.9	68.3	65.2
95.0	43.8	49.0	53.8	56.8	61.9	65.6	68.8	71.0	73.7	76.0	75.5	72.5	70.3	67.7	64.8
100.0	44.3	49.2	53.9	57.1	61.7	65.3	68.3	70.4	72.9	74.9	74.5	71.8	69.7	67.3	64.4
105.0	45.2	49.8	54.1	57.6	61.7	65.1	67.8	69.9	72.2	73.8	73.5	71.1	69.2	66.9	64.2
110.0	46.5	50.8	54.4	57.9	61.8	65.0	67.4	69.3	71.5	72.8	72.5	70.5	68.8	66.6	64.0
115.0	48.1	51.9	55.1	58.7	62.0	64.8	67.0	68.8	70.7	71.7	71.6	69.9	68.3	66.3	64.0
120.0	49.7	53.2	56.2	59.4	62.2	64.7	66.6	68.3	69.9	70.7	70.6	69.3	67.8	66.2	64.0
125.0	51.5	54.5	57.2	60.1	62.4	64.7	66.4	67.8	69.1	69.6	69.6	68.6	67.4	65.9	63.9
130.0	52.6	55.6	58.4	60.7	62.7	64.5	66.1	67.2	68.2	68.6	68.6	67.9	66.9	65.8	64.2
135.0	53.7	56.2	58.7	60.7	62.6	64.3	65.6	66.7	67.4	67.5	67.6	67.2	66.4	65.4	64.0
140.0	54.8	56.9	58.8	60.6	62.3	63.7	64.8	65.7	66.4	66.5	66.6	66.1	65.6	64.7	63.6
145.0	55.9	57.4	59.0	60.6	61.9	63.1	64.0	64.8	65.3	65.4	65.6	65.2	64.8	64.0	63.2
150.0	56.6	58.0	59.2	60.4	61.5	62.4	63.1	63.9	64.2	64.3	64.5	64.3	63.9	63.4	62.6
155.0	57.4	58.4	59.4	60.3	61.0	61.7	62.3	62.9	63.2	63.2	63.4	63.3	62.9	62.6	62.2
160.0	57.9	58.7	59.4	60.0	60.5	61.0	61.6	61.9	62.1	62.1	62.4	62.3	62.1	61.8	61.5
165.0	58.3	58.8	59.2	59.6	60.0	60.4	60.7	60.9	61.0	61.0	61.3	61.3	61.1	61.0	60.7
170.0	58.3	58.6	58.9	59.2	59.5	59.6	59.8	59.9	60.0	60.0	60.2	60.2	60.2	60.1	60.0
175.0	58.3	58.4	58.5	58.6	58.8	58.8	58.9	58.9	58.9	58.9	59.0	59.1	59.1	59.1	59.0
180.0	57.8	57.8	57.8	57.8	57.8	57.8	57.8	57.8	57.8	57.8	57.8	57.8	57.8	57.8	57.8

Test System:HOPOO HPG1900  
Temperature:25.3DEG  
Operators:  
Test Date:2024年09月15日

Test Set: 5.0deg/s B-Beta (TYPE B)  
Humidity:65.0%  
Test Distance:16.000 m  
Remarks:

HONGPU GONIOPHOTOMETERS SYSTEM TEST REPORT

LUMINOUS DISTRIBUTION INTENSITY DATA

Report number:

MANUFACTURER:	Address:	
NAME: 553105	TYPE:BLK	WEIGHT:
SPECIFICATION:	DIMENSION:	SERIAL No.:

UNIT: cd

C (DEG) γ (DEG)	300	305	310	315	320	325	330	335	340	345	350	355
0.0	59.9	59.9	59.9	59.9	59.9	59.9	59.9	59.9	59.9	59.9	59.9	59.9
5.0	61.3	61.2	61.0	60.9	60.7	60.6	60.5	60.4	60.3	60.2	60.1	60.0
10.0	62.6	62.3	62.0	61.8	61.5	61.1	60.8	60.4	60.2	59.9	59.6	59.4
15.0	63.6	63.1	62.7	62.2	61.7	61.2	60.5	60.0	59.4	58.9	58.4	58.0
20.0	64.6	63.8	63.2	62.3	61.6	60.8	60.1	59.2	58.5	57.7	57.0	56.3
25.0	65.4	64.3	63.4	62.4	61.3	60.1	59.0	58.0	56.9	55.9	55.0	54.2
30.0	66.0	64.9	63.6	62.1	60.7	59.2	57.7	56.3	54.8	53.5	52.5	51.5
35.0	66.7	65.2	63.5	61.7	59.8	57.7	56.0	54.1	52.4	50.9	49.6	48.3
40.0	67.2	65.4	63.3	61.0	58.6	56.3	54.0	51.8	49.6	47.8	46.1	44.6
45.0	67.7	65.4	62.8	60.3	57.3	54.6	51.7	49.0	46.4	44.2	42.3	40.6
50.0	68.0	65.5	62.5	59.3	56.0	52.6	49.2	46.1	43.1	40.4	38.2	36.4
55.0	66.8	64.1	61.5	58.4	54.6	50.5	46.7	42.9	39.4	36.4	33.7	31.8
60.0	65.7	62.8	59.8	56.5	52.5	48.6	44.0	39.7	35.6	32.1	29.1	27.0
65.0	64.6	61.6	58.7	54.6	50.3	45.9	41.3	36.6	31.8	27.7	24.4	21.9
70.0	63.8	60.7	57.8	53.1	48.6	43.5	38.4	33.3	28.2	23.4	19.6	16.8
75.0	63.1	60.0	56.8	51.8	47.1	41.7	36.1	30.3	24.7	19.5	15.0	11.7
80.0	62.5	59.7	56.2	51.1	46.1	40.5	34.4	28.3	22.1	16.2	10.3	6.94
85.0	62.1	59.7	55.9	50.8	45.7	39.8	33.6	27.2	20.9	14.4	8.30	2.86
90.0	61.9	59.9	56.0	50.9	45.8	39.9	33.7	27.3	21.2	14.8	8.96	4.35
95.0	61.4	59.0	55.3	50.2	45.1	39.3	33.2	27.0	20.9	14.9	9.32	4.66
100.0	61.2	58.4	54.9	49.9	45.1	39.5	33.6	27.7	22.1	16.6	11.6	8.68
105.0	61.1	58.0	54.9	49.9	45.3	40.0	34.8	29.4	24.3	19.5	15.8	13.3
110.0	61.1	57.9	55.0	50.6	46.1	41.3	36.4	31.6	27.2	23.3	20.2	18.0
115.0	61.2	58.2	55.4	51.4	47.2	42.8	38.5	34.3	30.6	27.4	24.6	22.7
120.0	61.5	58.7	55.7	52.5	48.7	44.8	41.1	37.4	34.2	31.4	29.0	27.4
125.0	61.7	59.3	56.6	53.5	50.4	47.0	43.7	40.6	37.8	35.4	33.5	32.1
130.0	62.2	60.0	57.5	54.7	52.1	49.3	46.5	43.9	41.5	39.4	37.8	36.4
135.0	62.2	60.2	58.3	55.9	53.6	51.3	49.0	46.9	44.9	43.1	41.7	40.6
140.0	62.3	60.6	58.8	57.1	55.1	53.3	51.4	49.6	48.0	46.6	45.4	44.4
145.0	62.1	60.9	59.4	57.9	56.5	55.0	53.4	52.1	50.7	49.6	48.6	47.7
150.0	61.9	60.9	59.9	58.7	57.6	56.4	55.3	54.3	53.2	52.2	51.3	50.7
155.0	61.5	60.9	60.1	59.3	58.5	57.5	56.7	55.9	55.1	54.4	53.7	53.2
160.0	61.1	60.6	60.0	59.7	58.9	58.4	57.7	57.2	56.7	56.1	55.6	55.1
165.0	60.5	60.2	60.0	59.6	59.2	58.8	58.4	58.1	57.8	57.3	56.9	56.6
170.0	59.9	59.6	59.4	59.3	59.1	58.9	58.7	58.4	58.3	58.1	57.9	57.7
175.0	59.0	58.9	58.9	58.8	58.7	58.7	58.6	58.5	58.4	58.3	58.2	58.2
180.0	57.8	57.8	57.8	57.8	57.8	57.8	57.8	57.8	57.8	57.8	57.8	57.8

Test System:HOPOO HPG1900  
Temperature:25.3DEG  
Operators:  
Test Date:2024年09月15日

Test Set: 5.0deg/s B-Beta (TYPE B)  
Humidity:65.0%  
Test Distance:16.000 m  
Remarks: